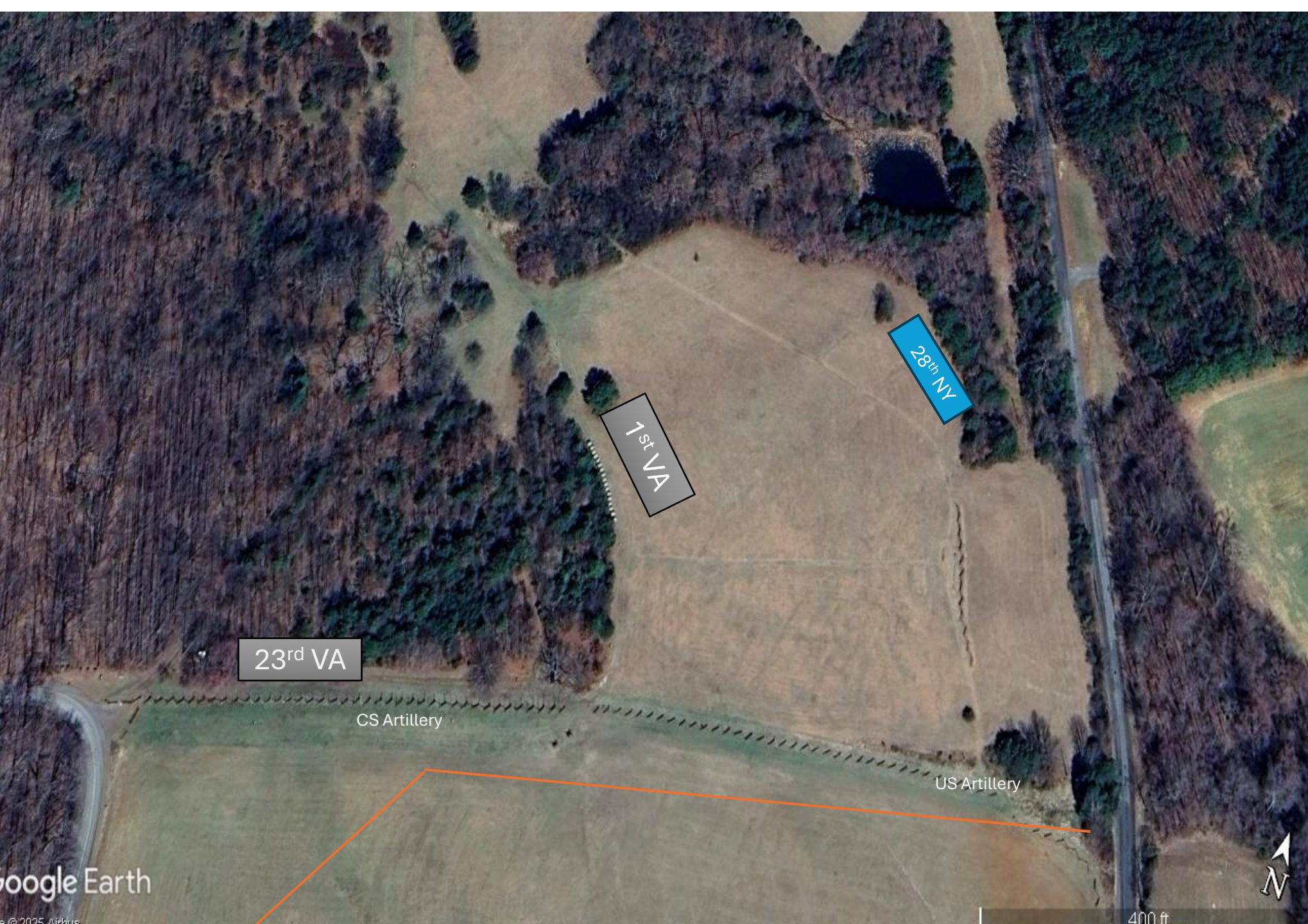


Assault of the 28th NY

Troops at starting
positions by 12:30pm

Battle to commence
at 1pm





Assault of the 28th NY

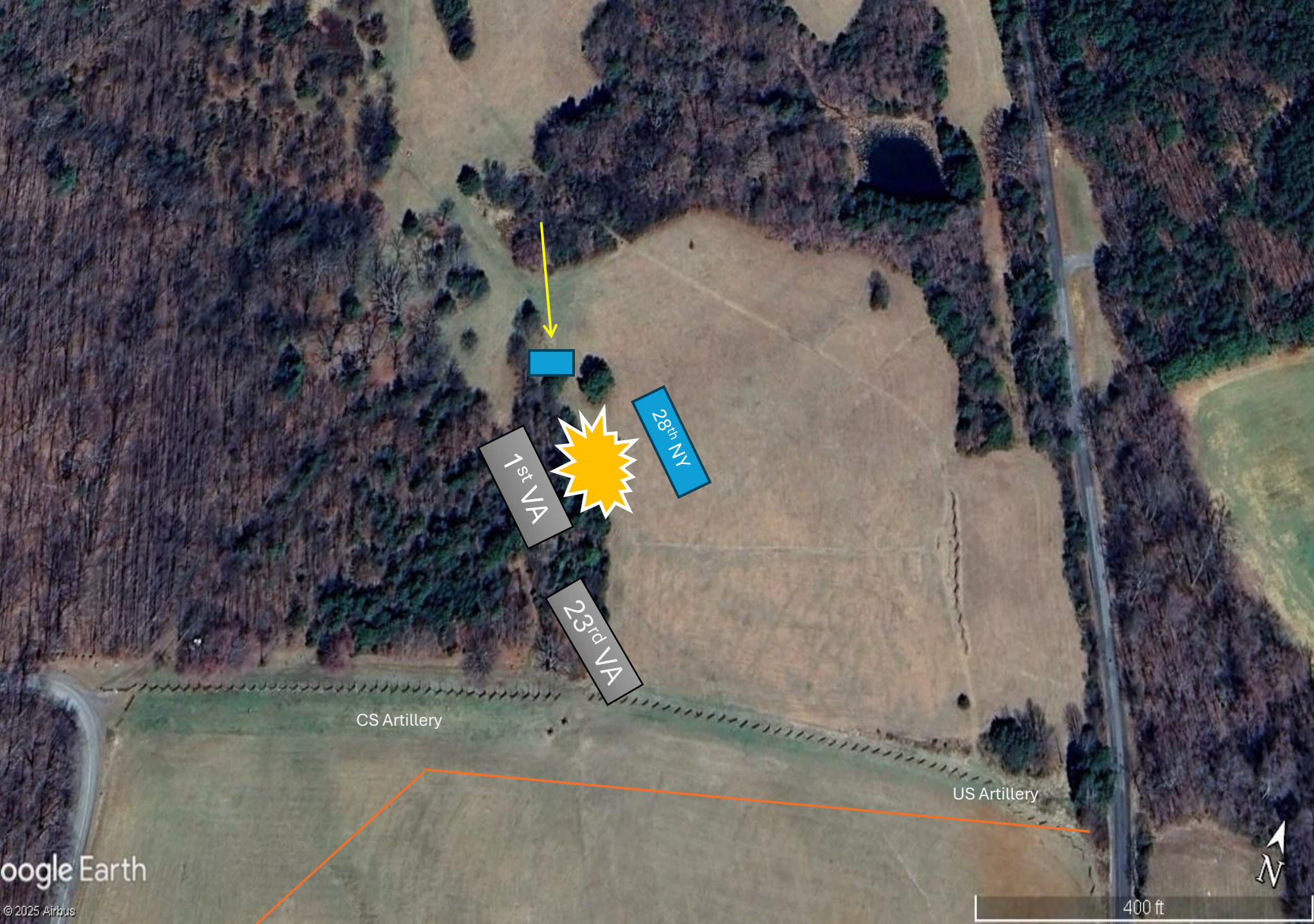
1:00pm - US Artillery open up
CS US Engage Skirmishers
CS Artillery Responds

Assault of the 28th NY

1:10pm US soldiers flank 1st VA and begins counter engagement

CS 1st VA moves into trees with 23rd VA coming up in support

US CS Guns continued firing



Assault of the 28th NY

1:20pm US force pushes CS deep
into woods. Fighting continues in
woods.

CS guns cease firing
US guns continue firing





Assault of the 28th NY

1:30pm US force begins breaking

CS force pushes US out of woods and pursues to mid field and stops
CS US guns are firing until CS troops halt

1:40pm Battle Scenario Concludes